



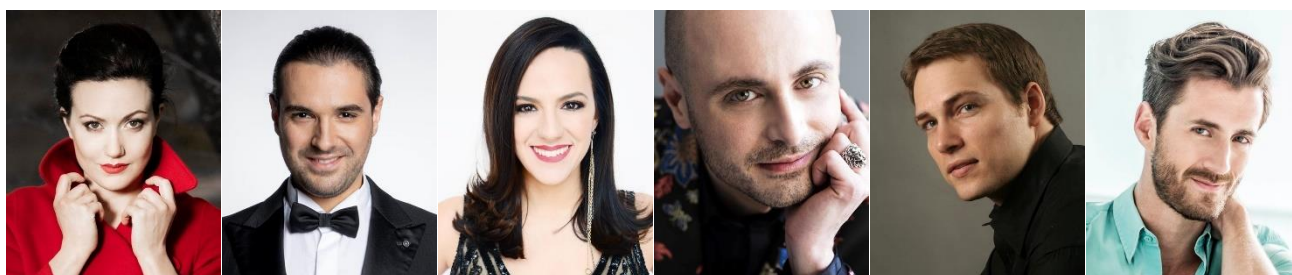
***PARTENOPE* RETURNS TO SAN FRANCISCO OPERA  
JUNE 15–28**

**Christopher Moulds conducts Handel's witty Baroque comedy in award-winning production by Christopher Alden set in a 1920s Parisian salon**



Scenes from Handel's *Partenope*. Photos: Cory Weaver/San Francisco Opera; Christopher Moulds (Caroline Juliane Krüger)

**International cast features Company debuts of Julie Fuchs, Carlo Vistoli and Nicholas Tamagna, along with returning San Francisco Opera artists Daniela Mack, Alek Shrader and Hadleigh Adams**



Julie Fuchs (*Partenope*); Carlo Vistoli (*Arsace*); Daniela Mack (*Rosmira*); Nicholas Tamagna (*Armando*); Alek Shrader (*Emilio*); Hadleigh Adams (*Ormonte*)

**Tickets available at (415) 864-3330 and [sfopera.com](https://www.sfopera.com)  
Livestream tickets for June 23 performance on sale now**

San Francisco, CA (May 9, 2024) — San Francisco Opera's 2024 Summer Season continues June 15 with George Frideric Handel's *Partenope* in director Christopher Alden's

award-winning production. Last seen on the War Memorial Opera House stage in 2014, this witty and sexy staging of Handel's 1730 romantic comedy updates the opera's setting from the mythical founding of Naples to a 1920s Parisian salon. **Christopher Moulds** conducts the San Francisco Opera Orchestra and an international cast of Handelians including three making house debuts and three returning San Francisco Opera artists.

The Company premiere of Alden's vision for *Partenope* was a critical and popular hit in 2014. The *San Francisco Chronicle* declared, "The continuing integration of Handel's work into the mainstream of operatic life remains one of the great success stories of the past decades. A production like this one, blending musical seriousness with theatrical panache, can only help matters further." *The Mercury News* said Alden's staging "turns the opera's gender-bending plot into a nonstop parade of visual and vocal delights."

Christopher Alden's work with San Francisco Opera extends back 50 years when he directed the affiliate company Western Opera Theater's 1974 touring production of Offenbach's *Les Contes d'Hoffmann*. He has returned on many occasions to direct a wide repertoire including the Company premiere of Stewart Wallace's *Harvey Milk*, Rossini's *La Cenerentola*, Verdi's *I Vespri Siciliani* and his Olivier Award-winning production of *Partenope*. This revival of *Partenope*, assisted by associate director **Roy Rallo**, features the work of creative team collaborators set designer **Andrew Lieberman**, costume designer **Jon Morrell**, original lighting designer **Adam Silverman** relit this season by **Gary Marder** and choreographer **Colm Seery**.

French soprano **Julie Fuchs** makes her American and role debut in the title role of *Partenope*, the first queen of Naples who is here reimagined as a magnetic salon hostess whose gatherings are frequented by social elites and Surrealist artists. A fast-rising operatic star, Fuchs' recent engagements included Gilda in Verdi's *Rigoletto* in Madrid, Norina in Donizetti's *Don Pasquale* in Paris, Poppea in Monteverdi's *L'Incoronazione di Poppea* in Barcelona and Juliette in Gounod's *Roméo et Juliette* in Zurich. She is a featured recording artist with releases on the Pentatone, Palazetto Bru-Zane, Deutsche Gramophone and Sony labels. Her most recent album, *Amadè*, showcases favorite arias and rarely heard music of the young Mozart.

In his US stage debut, **Carlo Vistoli** joins the Company as Arsace, a suitor of *Partenope* who is himself pursued by an old flame. Vistoli first drew attention as a member of Le Jardin des Voix, the young artists affiliate of esteemed early music ensemble Les Arts Florissants, and he has emerged as one of the leading Italian countertenors of his generation. Vistoli has won acclaim throughout Europe and Australia with his "rounded,

resonant Italianate sound and elegant phrasing" (Parterre) in the works of Gluck, Cavalli, Mozart and especially Handel.

Making his Company debut as Armindo, another besotted suitor of Partenope, is American countertenor **Nicholas Tamagna**. Praised for his portrayal of the Refugee in Jonathan Dove's 1998 opera, *Flight*, Tamagna has also won considerable praise in the Baroque repertoire. Of his performance as the title role of Handel's *Giustino*, the *Sydney Morning Herald* said he "sang with a tone of purity, strength and smoothness, unblemished by mannerism or the slightest hint of stridency."

Argentinian mezzo-soprano **Daniela Mack** scored a triumph last summer as Frida Kahlo in the Company premiere of Gabriela Lena Frank and Nilo Cruz's *El último sueño de Frida y Diego*. This summer she reprises the role of Rosmira, the estranged lover of Arsace who appears in disguise to win him back. The *San Francisco Chronicle* praised her Rosmira in 2014 as "delivering athletic, perfectly tuned coloratura and letting the audience feel viscerally the depth of the characters' ardor and pain."

Emilio, the military general who courts Partenope and who is presented in this staging as an avatar of Surrealist photographer Man Ray, is performed by American tenor **Alek Shrader**. Hailed as "a vocal dynamo" (*San Francisco Chronicle*) as Emilio in 2014, Shrader returns to the high-flying part this season.

The role of Ormonte is performed by baritone **Hadleigh Adams** who, like Mack and Shrader, is a graduate of the Merola Opera Program and a former San Francisco Opera Adler Fellow. Adams has appeared in a wide repertoire with San Francisco Opera, including works by Britten, Offenbach, Poulenc, Puccini, Rossini, Verdi and in the world premieres of Mark Adamo's *The Gospel of Mary Magdalene* (2013), Tobias Picker's *Dolores Claiborne* (2013) and John Adams' *Antony and Cleopatra* (2022).

**Christopher Moulds** is an early music expert known for his interpretations of the operas of Monteverdi, Cavalli, Purcell, Handel and Mozart. Maestro Moulds made his Company debut in 2019 conducting Handel's *Orlando* for which *Opera* (UK) said he "led a supple and nuanced performance by the orchestra."

Sung in Italian with English supertitles, the five performances of *Partenope* are scheduled for June 15 (7:30 p.m.), 19 (7:30 p.m.), 23 (2 p.m.), 25 (7:30 p.m.), 28 (7:30 p.m.), 2024, and are presented in repertory with Mozart's *The Magic Flute* (May 30–June 30) and the U.S. premiere of Kaija Saariaho's *Innocence* (June 1–21).

## LIVESTREAM: PARTENOPE, Sunday, June 23

The Sunday, June 23 matinee performance of *Partenope* will be livestreamed at 2 p.m. PT. The opera will also be available to watch on demand for 48 hours beginning on Monday, June 24 at 10 a.m. PT. Tickets for the livestream and limited on-demand viewing are \$27.50. For tickets and more information about livestreams, visit [sfopera.com/digital](https://sfopera.com/digital).

## PRE-OPERA TALKS

Cole Thomason-Redus, educational content creator for San Francisco Opera's Department of Diversity, Equity, and Community, will provide a 20-minute overview of the opera 55 minutes prior to each performance in the Opera House auditorium for ticketholders. An audio recording of the talk will be available at [sfopera.com/partenope](https://sfopera.com/partenope).

## TICKETS AND INFORMATION

Tickets for *Partenope* range from \$26 to \$426 and subscriptions for all three summer operas—Mozart's *The Magic Flute*, Kaija Saariaho's *Innocence* and Handel's *Partenope*—begin at \$78. Tickets and subscriptions may be purchased at the San Francisco Opera Box Office (301 Van Ness Avenue, San Francisco), by calling (415) 864-3330 and online at [sfopera.com](https://sfopera.com). San Francisco Opera Box Office hours are Monday 10 a.m.–5 p.m.; Tuesday through Friday 10 a.m.–6 p.m.; Saturday 10 a.m.–6 p.m. (Saturdays phone only). A \$2 per-ticket facility fee is included in Balcony 1, 2 and 3 zone prices; all other zones include a \$3 per-ticket facility fee.

Dolby Family's *Opera for the Bay* program provides \$10 tickets to all mainstage performances to Bay Area residents (home address zip code between 94000-95999) who have not purchased tickets in the past three seasons. *Opera for the Bay* tickets for *Partenope* go on sale at noon on Wednesday, May 15. Visit [sfopera.com/dolby](https://sfopera.com/dolby) for more information.

The War Memorial Opera House is located at 301 Van Ness Avenue. Patrons are encouraged to use public transportation to attend San Francisco Opera performances. The War Memorial Opera House is within walking distance of the Civic Center BART/Muni Station and near numerous bus lines, including 5, 21, 47, 49 and F Market Street. For further public transportation information, visit [bart.gov](https://bart.gov) and [sfmta.com](https://sfmta.com).

Gifts of all sizes help create San Francisco Opera's programs and are appreciated. To donate visit [sfopera.com/donate](http://sfopera.com/donate).

All casting, programs, schedules and ticket prices are subject to change. For further information about San Francisco Opera's 2023–24 Season, visit [sfopera.com](http://sfopera.com).

####

### **PARTENOPE CASTING AND CALENDAR**

\*\*American debut \*San Francisco Opera Debut †Role Debut ++Merola and Adler Fellowship Graduate

All performances take place at the War Memorial Opera House (301 Van Ness Avenue in San Francisco).

**PARTENOPE** by George Frideric Handel

**June 15** (7:30 p.m.), **19** (7:30 p.m.), **23** (2 p.m.), **25** (7:30 p.m.), **28** (7:30 p.m.), **2024**

Opera in three acts. With an anonymous libretto adapted from Silvio Stampiglia's libretto

English National Opera and Opera Australia co-production

Sung in Italian with English supertitles

Approximate running time: 3 hours, 25 minutes including two intermissions

World Premiere:	London, February 24, 1730
First SFO performance:	October 15, 2014
Most recent:	October–November 2014

**Cast:**

<i>Partenope</i>	Julie Fuchs **†
<i>Rosmira</i>	Daniela Mack ++
<i>Arsace</i>	Carlo Vistoli **†
<i>Armindo</i>	Nicholas Tamagna *†
<i>Emilio</i>	Alek Shrader ++
<i>Ormonte</i>	Hadleigh Adams †++

**Creative Team:**

<i>Conductor</i>	Christopher Moulds
<i>Production</i>	Christopher Alden
<i>Associate Director</i>	Roy Rallo
<i>Set Designer</i>	Andrew Lieberman
<i>Costume Designer</i>	Jon Morrell
<i>Original Lighting Designer</i>	Adam Silverman
<i>Revival Lighting Designer</i>	Gary Marder
<i>Choreographer</i>	Colm Seery

**San Francisco Opera Orchestra**

---

San Francisco Opera is sponsored, in part, by Norby Anderson, Julie Dickson, Jerome L. and Thao N. Dodson, The Dolby Family, Carol and Dixon Doll, Bertie Bialek Elliott, Peter Fenton and Kate Greer, Keith and Priscilla Geeslin, Ann and Gordon Getty Foundation for the Arts, Louise Gund, John A. and Cynthia Fry Gunn, Elizabeth B. Jamieson (in memoriam, J. Burgess Jamieson), Franklin and Catherine Johnson, Edmund W. and Jeannik Méquet Littlefield Fund, Bernard and Barbro Osher, Barbara Oshman, Jeff and Marieke Rothschild, Jan Shrem and Maria Manetti Shrem, Dianne and Tad Taube, Phyllis C. Wattis Endowment Funds, Diane B. Wilsey, and Barbara A. Wolfe.

*Partenope* is made possible, in part, by Barbara A. Wolfe; Bernard and Barbro Osher; and Jan Shrem and Maria Manetti Shrem.

San Francisco Opera livestreams are made possible, in part, by George and Leslie Hume.

Yamaha is the official piano of San Francisco Opera.

San Francisco Opera is supported, in part, by a grant from Grants for the Arts.



San Francisco Opera is a member of

**OPERA  
AMERICA**

###

**PRESS PHOTOS:** High-resolution, downloadable photographs, including artist headshots and production images, for *Partenope* are available at [sfopera.com/press](https://sfopera.com/press).

For further press information, please contact San Francisco Opera Communications:

Julia Inouye (415) 565-6430 / [jinouye@sfopera.com](mailto:jinouye@sfopera.com)

Jeffery McMillan (415) 565-6451 / [jmcmillan@sfopera.com](mailto:jmcmillan@sfopera.com)

Teresa Concepcion (415) 565-6470 / [tconcepcion@sfopera.com](mailto:tconcepcion@sfopera.com)